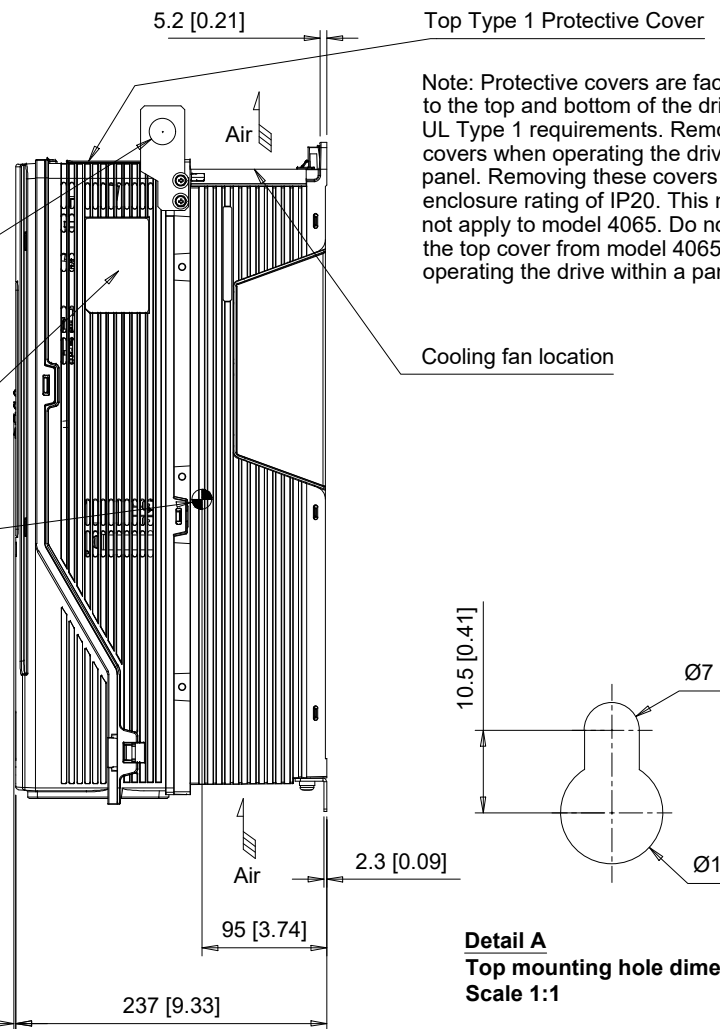


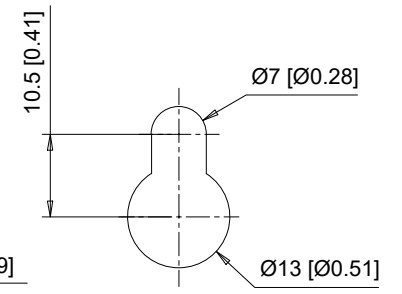
(4) Mounting Holes for M6 [1/4"] Screws. See Detail A for top mounting hole dimensions.

(2)-Lifting Holes Ø20 [Ø0.79]  
Note: Spreader bar required to avoid damage during lifting

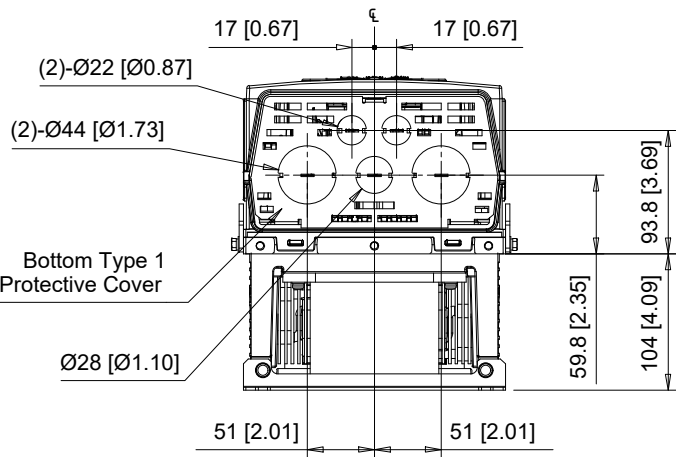
Center of Gravity  
Note: Dimensions shown are measured from the bottom left mounting hole



Note: Protective covers are factory installed to the top and bottom of the drive to meet UL Type 1 requirements. Remove these covers when operating the drive within a panel. Removing these covers results in an enclosure rating of IP20. This note does not apply to model 4065. Do not remove the top cover from model 4065 when operating the drive within a panel.



**Detail A**  
Top mounting hole dimensions  
Scale 1:1



C/C: FP65□	INPUT VOLTAGE 3-PHASE (VAC)	WEIGHT Kg (lb)		COOLING FANS
		STANDARD	WITH EMC FILTER	
2046□□□	200 TO 240	14 (30.9)	15 (33.1)	1
2059□□□		15 (33.1)	16 (35.3)	1
4040□□□	380 TO 480	15 (33.1)	16 (35.3)	1
4052□□□		17 (37.5)	18 (39.7)	1
4065□□□		19 (41.9)	20 (44.1)	1

□ denotes A-Z

A B C D E F G H I J

1

2

3

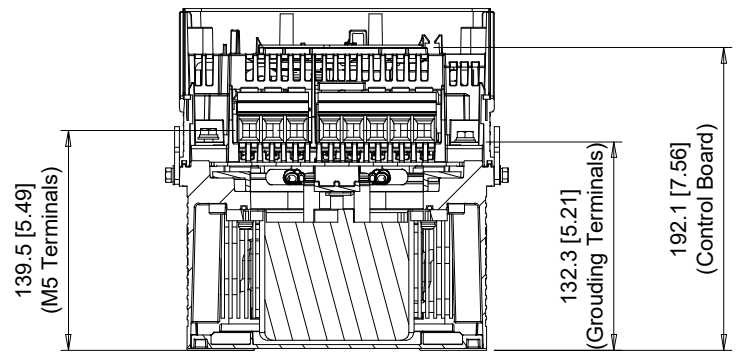
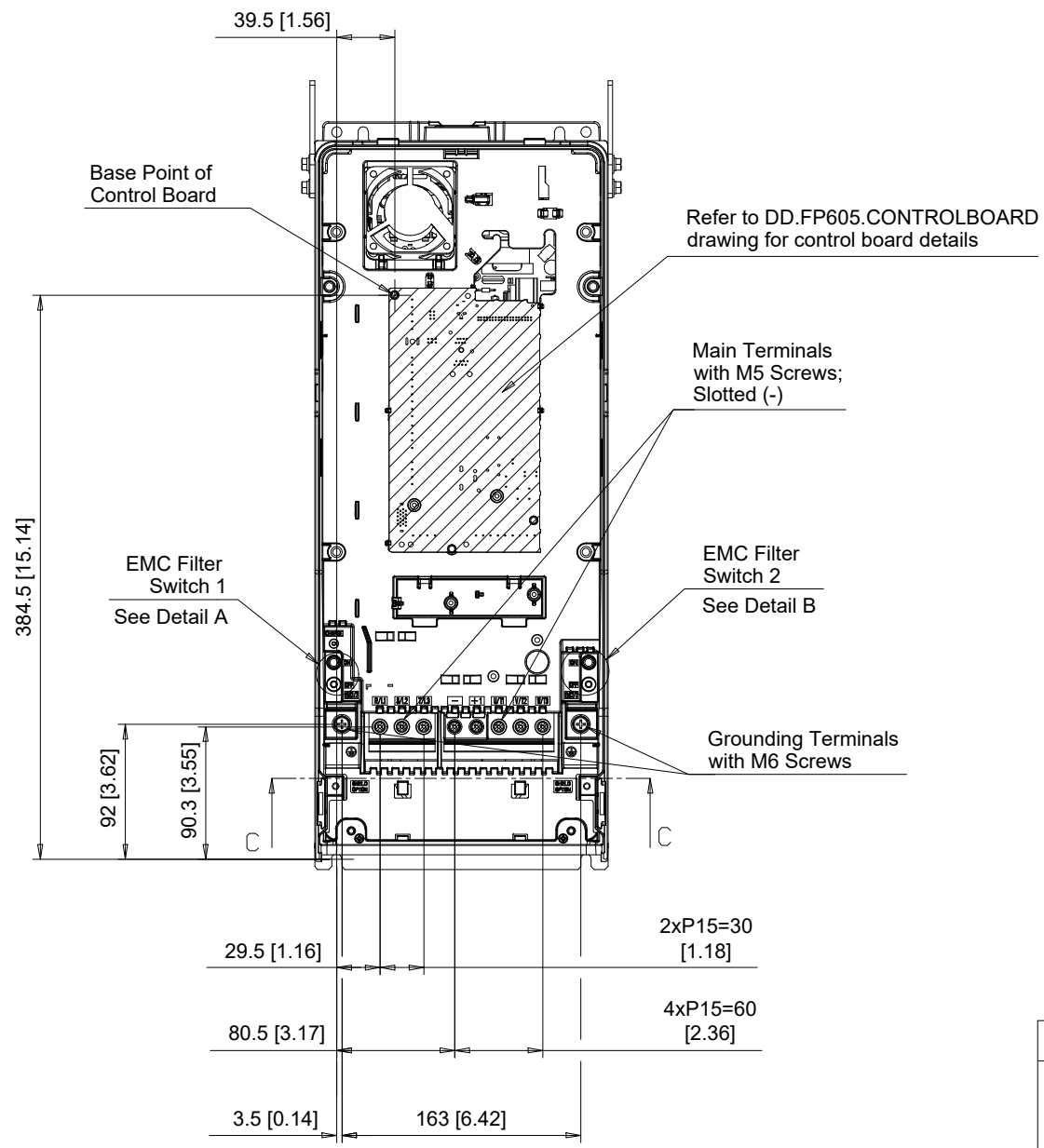
4

5

6

7

8



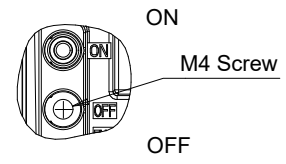
Section C-C

**EMC FILTER SWITCHES**

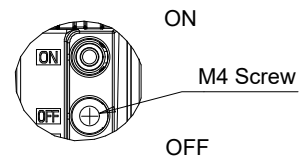
Note: EMC filter switches enabled only on models with built-in EMC filter

**EMC SW1**

**EMC SW2**



Detail A  
Scale 1:2



Detail B  
Scale 1:2

C/C: FP65□	TERMINAL SYMBOL	WIRE RANGE AWG (mm <sup>2</sup> )	TERMINAL SCREW	CLAMPING TORQUE N.m. (lb.in.)
2046□□□	R/L1, S/L2, T/L3	8 - 2 (10 - 35)	M5	4.5 (40)
2059□□□	U/T1, V/T2, W/T3	8 - 2 (10 - 35)	M5	4.5 (40)
4040□□□	-, +1	8 - 2 (10 - 35)	M5	4.5 (40)
4052□□□	⊕	14 - 4 (2.5 - 25)	M6	4.0 - 5.0 (35 - 44)
4065□□□				

□ Denotes A-Z

Note: Refer to applicable codes and standards for proper wire type and size.



UNITS MM [IN]  
SCALE 1:5

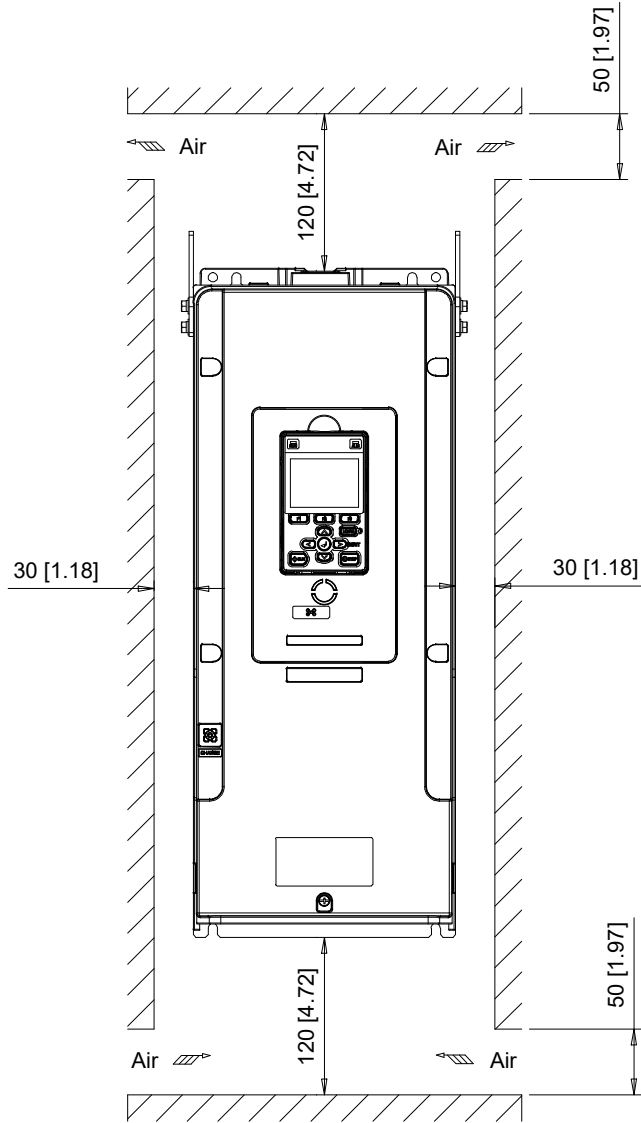
DRWN. J. MATTAS 3-8-21  
CHKD. J. PIOTROWSKI 3-30-22  
TECH. L. UDDIN 4-16-22  
APRV. J. CAIRO 4-21-22

TITLE  
FP605 DIMENSION DRAWING  
FRAME SIZE 3  
IP20/UL TYPE 1 ENCLOSURE

SIZE A PAGE 2 OF 3  
DWG.NO. DD.FP605.FR3.T1

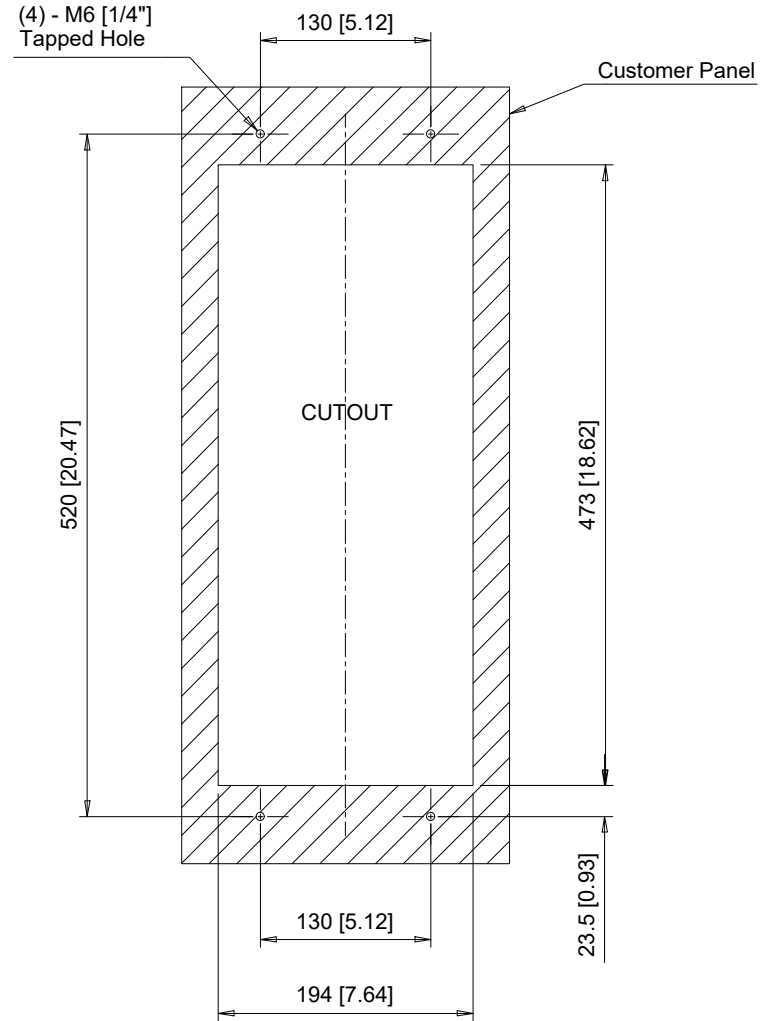
REV 0

Minimum Installation Clearances



Note:  
For alternate mounting configurations, consult manual.

Panel Cutout  
For External Heatsink Mounting Configuration



Notes:  
Exposed heatsink minimum clearance D = 109 [4.29].  
Refer to external heatsink instructions document for additional details.

**YASKAWA**

UNITS MM [IN]  
SCALE 1:6

DRWN.	J. MATTAS	3-8-21
CHKD.	J. PIOTROWSKI	3-30-22
TECH.	L. UDDIN	4-16-22
APRV.	J. CAIRO	4-21-22

TITLE  
FP605 DIMENSION DRAWING  
FRAME SIZE 3  
IP20/UL TYPE 1 ENCLOSURE

SIZE	A	PAGE	3 OF 3
DWG.NO.	DD.FP605.FR3.T1		

REV  
0